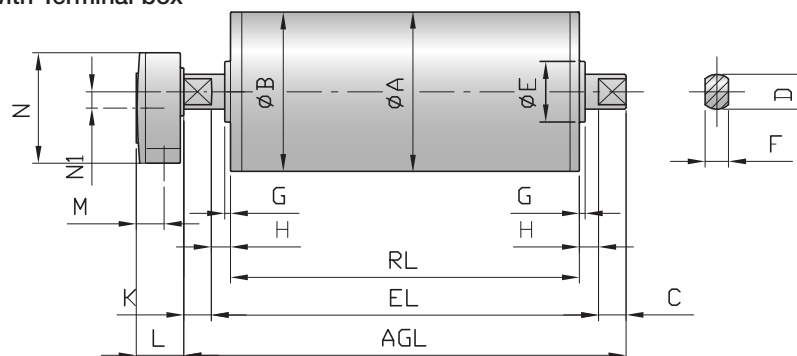
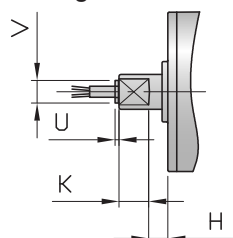


# Motorized Pulley 138E, Ø 138 mm

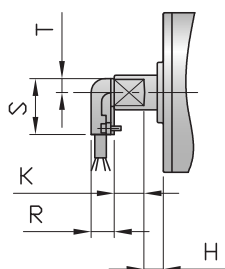
Motorized Pulley with Terminal box



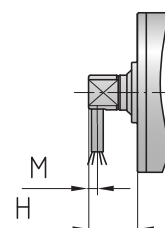
Motorized Pulley with cable Straight connector



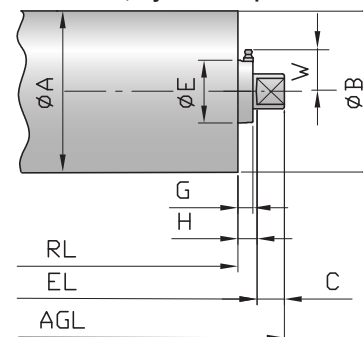
Elbow connector



Front shaft with cable slot



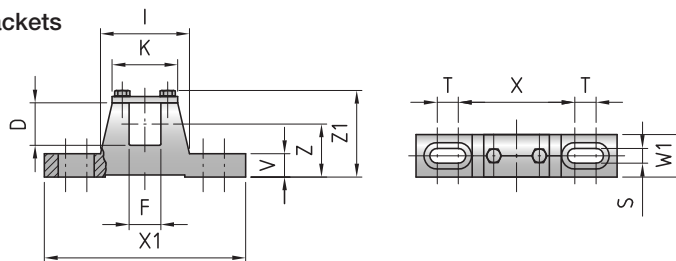
Idler pulley stainless steel version; cylindric option



**Standard measurements**

Type / Option	Ref.	A mm	B mm	C mm	D mm	E mm	F mm	G mm	H mm	K mm	W mm	L mm	M mm	N mm	N1 mm	U mm	V mm	R mm	S mm	T mm	
138E (UT138E) / Terminal box		138.5	137	23.5	30	54	20	5	16.5	23.5	36	41	24	95	14						
SS version (regreasable seals)					64.5		13.5						36		3.5	19.5					
Straight connector									16.5	25.5		3.5				3.5	19.5				
Elbow connector									16.5	25.5		20						20	48	12	
Front shaft with cable slot										25.5			8-11								

**Mounting brackets KL30**



Motorized Pulley	Material	Dimensions											Weight kg	
		D mm	F mm	I mm	K mm	S mm	T mm	V mm	W1 mm	X mm	X1 mm	Z mm		Z1 mm
138E	Cast iron	30	20	86	57	11	17	12	24	110	180	44.5	72	0.7